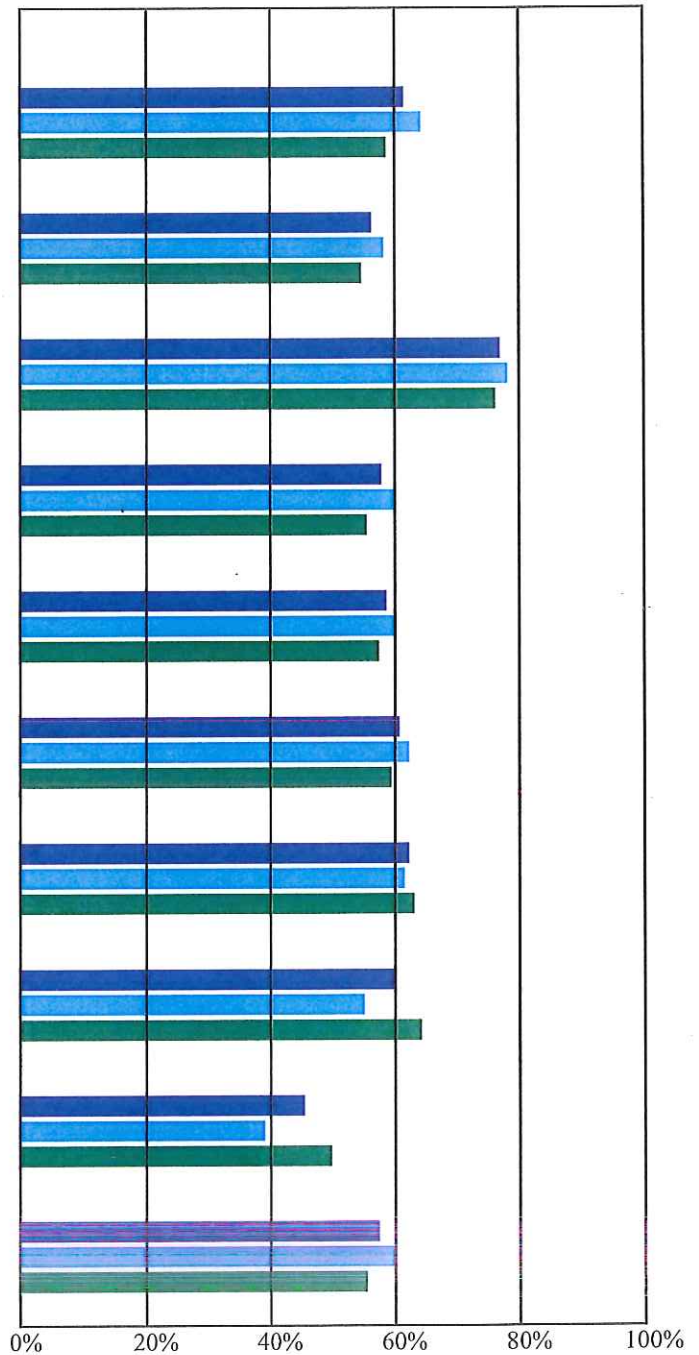

WELLNESS SUMMARY

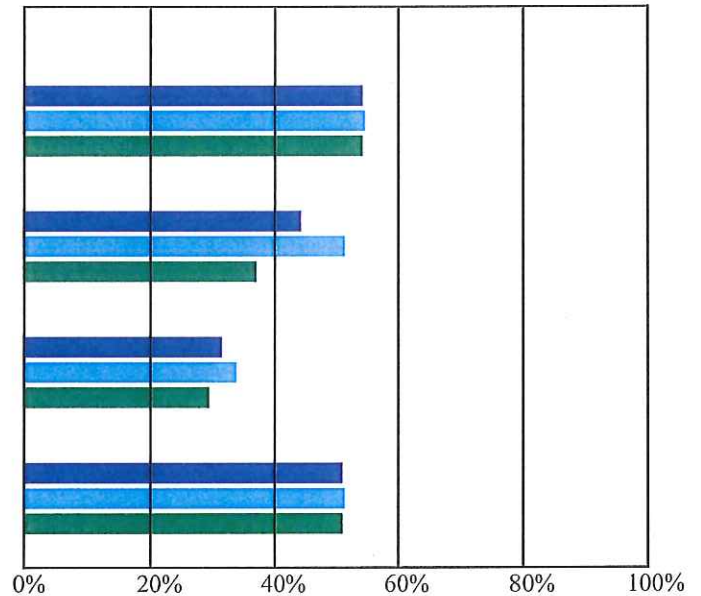
The Board of Education recognizes that student wellness and proper nutrition are related to students' well-being, growth, development, and readiness to learn. The Board is committed to providing a school environment that promotes and protects student wellness, proper nutrition, nutrition education, and regular physical activity as part of the total learning experience. In a healthy school environment, students will learn about and participate in positive dietary and lifestyle practices that can improve student achievement.

We encourage participation on the school or system wellness teams. Express your desire to participate by calling your school office or the School Nutrition office (706-638-7169). The System Wellness Team has semi-annual meetings and all wellness activities and school goals are reviewed and results will be shared district-wide by various means.

School		Tested	In HFZ	HFZ%
Chattanooga Valley 8/27/2013 to 6/15/2014	Total	457	281	61
	Girls	225	145	64
	Boys	232	136	59
Cherokee Ridge Elementary 8/27/2013 to 6/15/2014	Total	524	295	56
	Girls	230	134	58
	Boys	294	161	55
Fairyland Elementary 8/27/2013 to 6/15/2014	Total	163	126	77
	Girls	70	55	79
	Boys	93	71	76
Gilbert Elementary School 8/27/2013 to 6/15/2014	Total	219	127	58
	Girls	111	67	60
	Boys	108	60	56
Naomi Elementary School 8/27/2013 to 6/15/2014	Total	346	203	59
	Girls	162	97	60
	Boys	184	106	58
North LaFayette Elementary 8/27/2013 to 6/15/2014	Total	371	226	61
	Girls	186	116	62
	Boys	185	110	59
Rock Spring Elementary 8/27/2013 to 6/15/2014	Total	330	206	62
	Girls	170	105	62
	Boys	160	101	63
Rossville Elementary School 8/27/2013 to 6/15/2014	Total	433	260	60
	Girls	200	110	55
	Boys	233	150	64
Saddle Ridge School 8/27/2013 to 6/15/2014	Total	79	36	46
	Girls	33	13	39
	Boys	46	23	50
Stone Creek Elementary 8/27/2013 to 6/15/2014	Total	369	213	58
	Girls	169	102	60
	Boys	200	111	56



School		Tested	In HFZ	HFZ%
Chattanooga Valley Middle 8/27/2013 to 6/15/2014	Total	413	225	54
	Girls	172	94	55
	Boys	241	131	54
LaFayette Middle School 8/27/2013 to 6/15/2014	Total	488	216	44
	Girls	241	124	51
	Boys	247	92	37
Rossville Middle School 8/27/2013 to 6/15/2014	Total	871	274	31
	Girls	347	118	34
	Boys	524	156	30
Saddle Ridge School 8/27/2013 to 6/15/2014	Total	290	149	51
	Girls	138	71	51
	Boys	152	78	51



School		Tested	In HFZ	HFZ%
LaFayette High School 8/27/2013 to 6/15/2014	Total	1013	432	43
	Girls	409	197	48
	Boys	604	235	39
Ridgeland High School 8/27/2013 to 6/15/2014	Total	599	257	43
	Girls	191	99	52
	Boys	408	158	39

